

# FRENCH LANGUAGE SUMMER PROGRAM FOR ENGINEERS AND SCIENTISTS

INTENSIVE ONLINE AND HYBRID COURSES  
JULY - AUGUST 2021



- \*\*\* formations
- \*\*\* enseignants
- \*\*\* accueil
- \*\*\* locaux
- \*\*\* gestion

18 décembre 2021 - 17 décembre 2025



**JOIN US THIS SUMMER, IMPROVE YOUR COMMUNICATION SKILLS IN FRENCH, DISCOVER FRENCH CULTURE AND THE PARIS REGION!**

## COURSE DETAILS

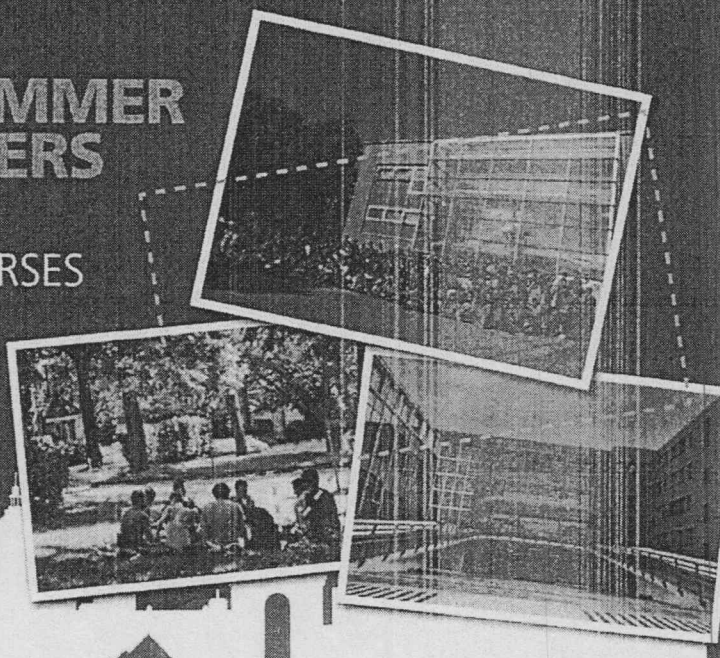
The program consists of a 25-hour course per week (from Monday to Friday).

Courses are designed for all learners from beginners (A1) through advanced levels (B2-C1), in accordance with the Common European Framework of Reference for Languages (CEFR).

Immersion learning in small groups guarantees an efficient and rapid progress.

Students can register for 4, 6 or 8 weeks, according to their levels.

**BENEFIT FROM  
HIGH QUALITY TEACHING**



Comprehensive and innovative learning methods are our key to success !

## CORE FRENCH LANGUAGE

- Phonetics, Grammar, Vocabulary
- Introduction to French culture

## MORNING COURSES ON CACHAN CAMPUS

- Cultural visits and activities
- Conversation and writing workshops
- Theater classes (speech and public speaking)
- Picnics at the Parc de Sceaux and in Paris

## FRENCH LANGUAGE FOR SPECIFIC OBJECTIVES

- Lessons focused on scientific subjects (mathematics, mechanics, economics, etc.)
- Methodology

We have rooms equipped for blended learning (comodal):

- Active learning, collaboration and student-teacher interactivity
- Personalized teaching, tutoring sessions
- Self-paced lessons and assignments throughout the training

## SMALL INTERACTIVE CLASSES

### LEARNING OUTCOMES

At the end of the program, students will have:

- Improved Core and Specific French language skills
- Better knowledge of French culture

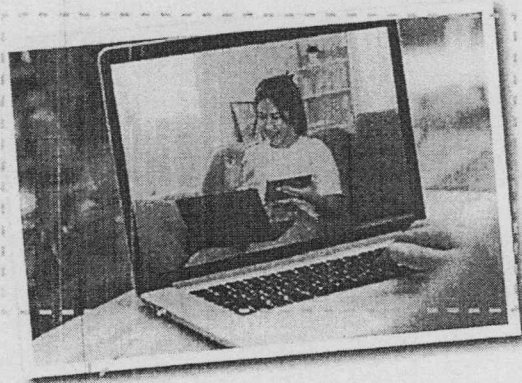
### TIMETABLE

Classes will be held from July 4 to September 2.

Group/Levels	Dates	Course duration	Hours per week
A1 & A2	July - August	6 to 8 weeks	25 hours
B1 & B2	July - August	4 weeks	25 hours
Intermediate-refresher	sessions mid-August	2 weeks	25 hours

Please consult ESTP and EPF webpages for more informations.

**WITH OUR HANDS-ON LEARNING,  
GAIN KNOWLEDGE ABOUT FRENCH  
LANGUAGE APPLIED TO SCIENCE  
AND ENGINEERING.**



### LANGUAGE TEST

All our students take a placement test at the beginning of the program in order to determine their level in French.

We guarantee a rapid progress of each student with regular assessment in class throughout the program.

At the end, students take a final test in order to certify their improvement.

### CERTIFICATE & ACADEMIC CREDITS

At the end of the program, a certificate of attendance indicating the level achieved in French, is issued to each student.

At the end of each week, and upon success, students may obtain 1 transferrable academic credit (ECTS). Summer Language courses credits may be accepted towards a degree according to the home institution. Students may check their home institution's transfer policy.

**BE PART OF A VIBRANT  
AND IMMERSIVE SUMMER  
SCHOOL EXPERIENCE**

### TEACHING STAFF

Our language professors have a solid experience in teaching to future international engineers.

Scientific subjects and language are taught by qualified college professors and professionals.



### FOLLOW THE CLASSES ONLINE

Students unable to come to France for this program will have the possibility to follow the classes online.

Our professors rely on effective digital educational tools which enable them to deliver suitable academic on-line contents.

Students can access common digital communication tools and platform.

### TUITION AND REGISTRATION FEES

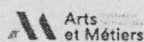
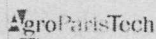
For more information on the tuition and registration fees, please refer to ESTP and EPF webpages.

#### Tuition fees include:

- 20 hours of lessons per week (Core and Scientific French language)
- 5 hours of tutoring, cultural activities and/or workshops per week
- 1 placement test and 1 certificate of attendance per student



## PARTNER UNIVERSITIES TRUST OUR PROGRAM:



## WHY EPF/ESTP PARIS FRENCH LANGUAGE SUMMER PROGRAM?

- Over a 20-year experience in teaching French language
- Courses to suit individual needs of all levels
- General and scientific orientation curriculum
- Rapid improvement of communication skills

## WHO CAN APPLY?

Our intensive summer courses are highly recommended for students in scientific and technical disciplines: engineering, civil engineering computer science, chemistry, architecture, mathematics etc.

The program is also open to any students, persons and teaching staff who are interested in improving their French language skills.

## QUALITY LABELS

Our intensive summer program has been awarded with two quality labels:

- The European Language Label since 2005
- The "Label Qualité FLE" - Renewed in 2021 - 15 stars rating



Founded in 1925 and located in Cachan, Troyes and Montpellier, EPF is one of the best postsecondary School for general engineering sciences. In 1991, EPF - Graduate School of Engineering - acquired the status of Public Foundation and became co-educational in 1994.

EPF offers to its 2 600 students a year (including 15% of international students) a five-year postsecondary engineering sciences curriculum. First three years consist in a general curriculum. In 4<sup>th</sup> year, students chose among 9 different majors: Aeronautics & Space, Sustainable Materials & Structures, Engineering & Digital Technology, Engineering & Management, Engineering & Health, Data Engineering, Energy & Environment, Engineering & Sustainable Architecture, Transition Engineering.

EPF's curricula favors a faster integration into the job market with one of the highest starting salaries amongst post-secondary schools. More than 13,000 graduated engineers from EPF are spread out within the industry and service sectors.

### EPF – Office for Global Engagement

information.fle@epf.fr  
Tel: +33 1 55 52 11 00 - www.epf.fr/en

@EPF.ingenieurs @epfingenieurs @epf\_ingenieurs



Ecole Spéciale des Travaux Publics, du Bâtiment et de l'Industrie (ESTP Paris) was founded in 1891 as a private higher education institution and officially recognized by the French government in 1921.

ESTP Paris is the leading engineering school in the construction sector in France. It counts over 2,800 students every year and trains the biggest students flow for the construction and civil engineering industry.

The school combines teaching excellence with programs tailored to the technical and managerial requirements of industry. Several training programs have been awarded international quality labels, such as EUR-ACE & RICS.

ESTP Paris is renowned for its close links to industry, its strong international relations (90 partner universities in 40 countries), its equal opportunities policy and the emphasis put on sustainable development.

### ESTP Paris – International Relations Office

information.fle@estp-paris.eu  
Tel: +33 1 49 08 24 66 - www.estp.fr/en

@estpparis @estp\_paris @estpparis